



**ALASKA DIVISION OF HOMELAND SECURITY &
EMERGENCY MANAGEMENT**



SITUATION REPORT 22-020 • JANUARY 20, 2022

Toll-Free 1.800.478.2337

Anchorage Area 907.428.7000

SEOC 907.428.7100

<p><u>SEOC Preparedness Level</u> Level 2 – Heightened Awareness</p>	<p>http://ready.alaska.gov</p>	<p><u>National Terrorism Advisory System:</u> Read the updated NTAS Bulletin here</p>
<p><u>Maritime Security (MARSEC)</u> Level:1-Minimum Appropriate Security Measures</p>	<p>WHO Novel Coronavirus Pandemic (COVID-19): 2019 Novel Coronavirus</p>	<p><u>Alaska Military Installation Force Protection Level:</u> FPCON Bravo</p>

(Significant changes from previous situation reports are in red.)

Significant Issues:

SEOC at Level 2 – *Heightened Awareness* – Statewide Severe Weather Impacts

The State Emergency Operations Center (SEOC) is activated in a hybrid virtual/in-person Incident Command structure to manage the current state declared disaster responses and other incidents arising statewide.

Threat Level Changes:

None

State of Alaska Department of Health and Social Services (DHSS)

DHSS is now leading the State of Alaska COVID-19 Recovery through Department Operations, supported by SEOC and other state departments as required.

For current COVID-19 information, see:

<https://covid19.alaska.gov/>

<https://www.cdc.gov/coronavirus/2019-ncov/index.html>

NTAS BULLETIN

To read current or expired advisories, click the link below:

<https://www.dhs.gov/national-terrorism-advisory-system>

Travel Alerts and Conditions

For current driving conditions dial 511 or link to <http://511.alaska.gov/>

Barry Arm Landslide / Tsunami Risk

For the latest information on the Barry Arm Landslide and Tsunami risk, click here:
[DGGs Barry Arm Landslide and Tsunami Hazard](#)

Recent Earthquakes

USGS Earthquake Information: <http://earthquake.usgs.gov/>

National Tsunami Warning Center: <http://tsunami.gov/>

Alaska Volcanoes

Great Sitkin Alert Level: **Watch** and Aviation Color Code: **Orange**

Pavlof Alert Level: **Watch** and Aviation Color Code: **Orange**

Semisopchnoi Alert Level: **Watch** and Aviation Color Code: **Orange**

For Alaska Volcano updates, go to: <https://www.avo.alaska.edu/>

Air Quality Index (AQI) Advisories

For the most up to date Air Quality Index Advisories:

<http://dec.alaska.gov/Applications/Air/airtoolsweb/Home/Index>

Spills of Oil and Hazardous Substances

The ADEC Spill Prevention and Response page is located at:

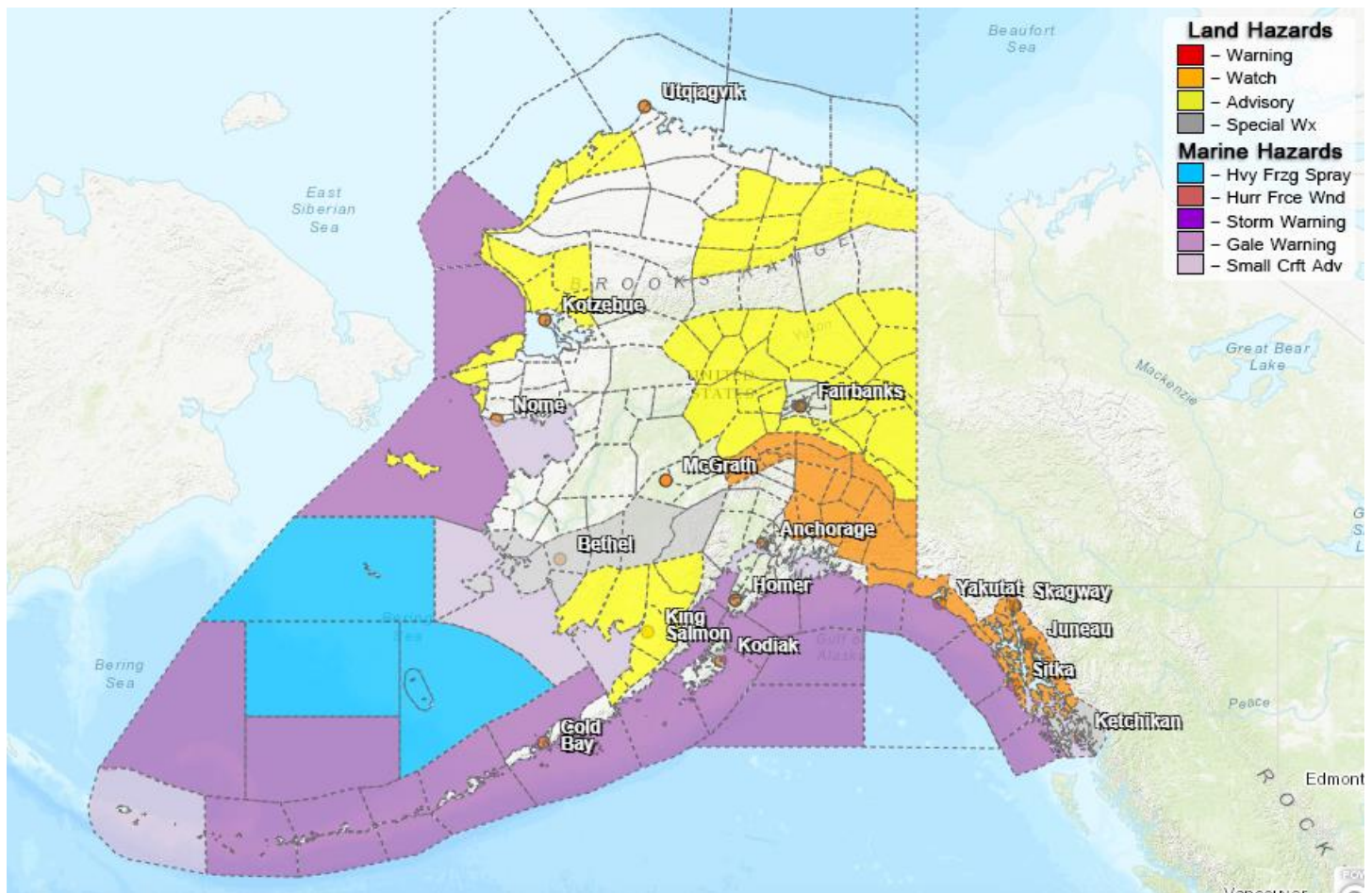
<http://dec.alaska.gov/spar/ppr/spill-information/response/>

Alaska Cyber Security Information

State Employees may sign up for cyber security notifications and alerts at

<https://oit.alaska.gov/security>

Significant Weather:



A Flood Watch is in effect for most of the Panhandle. Rainfall is expected across the region beginning tonight and continuing through Saturday evening. Expected rainfall totals for the area:

- 2 – 4 inches in Haines and Skagway.
- 3 inches in Kake, Petersburg, and Wrangell.
- 4 – 6 inches in Angoon, Juneau, and Sitka.
- 6 to 8 inches in Elfin Cove, Pelican, and Yakutat.

A Winter Storm Watch is in effect for the Copper River Basin. Freezing rain and ice accumulations of up to ¼ of an inch are possible tomorrow.

A High Wind Watch is in effect for Denali and the Eastern Alaska Range from tomorrow afternoon through Saturday. Southeast winds of up to 70mph are possible.

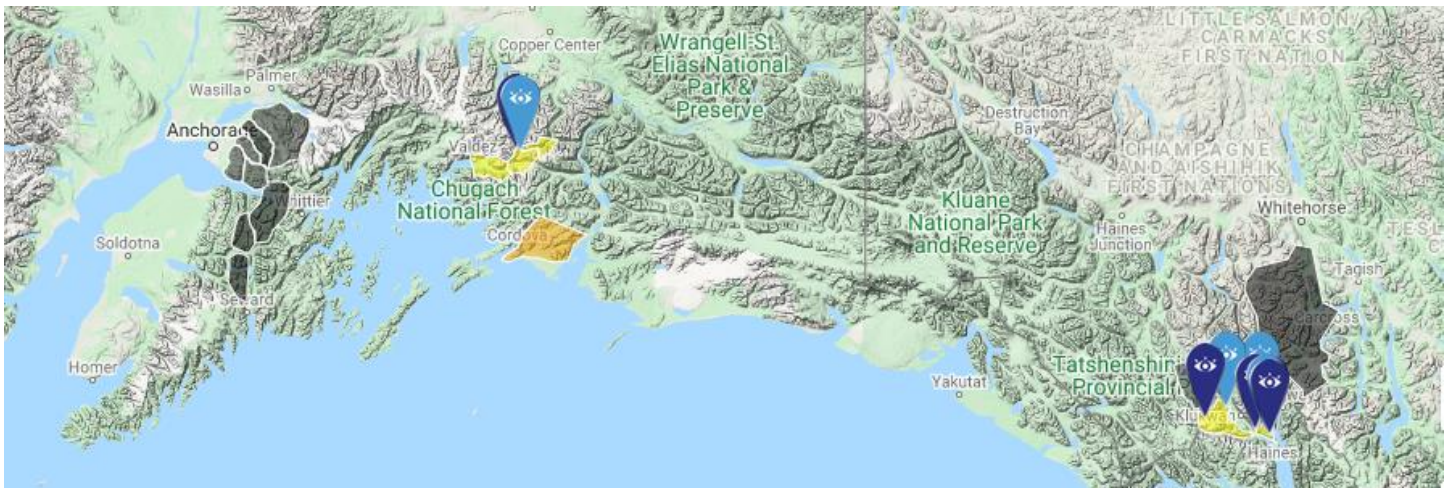
A Wind Advisory is in effect from Friday morning through Saturday morning for Deltana and Tanana Flats and the Upper Tanana Valley. Southwest winds of up to 40mph are possible.

A Winter Weather Advisory remains in effect for the Central Interior, Yukon Flats, and surrounding uplands until 6:00 A.M. Saturday. Up to two inches of snow accumulation is possible across the region.

A Special Weather Statement has been issued for Bristol Bay, the Kuskokwim Delta, and Middle Kuskokwim Valley through this weekend. Two storm systems are expected to bring between 1 to 4 inches of snow and a wintry mix to Southwest Alaska.

For more information and the most current weather, Watches / Warnings / Advisories go to:
<http://www.weather.gov/arh>.

Avalanche Forecast:



There are areas near Haines, Chilkat Lake, Valdez, and the Richardson Highway with moderate risk. There are areas near Cordova with considerable risk.

Check the Avalanche Forecast Center closest to your area for the most up to date information on avalanche potential. <https://alaskasnow.org> or <https://www.weather.gov/afc/avalancheweather>

The Next Situation Report: will be 21 January 2022. A significant change in the situation or the threat level will prompt an interim report.

This report is posted on the internet at <https://ready.alaska.gov/sitrep>. To register for email distribution, go to <http://list.state.ak.us/mailman/listinfo/dhsem.situation.report>. Direct questions regarding this report to the SEOC at 907-428-7100 or seoc@alaska.gov